

TREATMENT PLANNING SERVICES

Flexible Treatment Planning Assistance for CyberKnife[®] System Customers

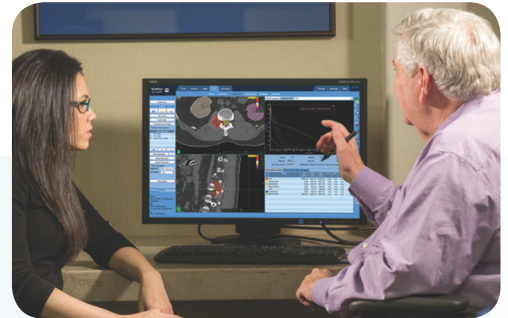
Accuray Treatment Planning Services provide back-up and supplemental treatment planning support for CyberKnife[®] System customers. This service is used for timely plan turnaround, primarily during periods of high patient volume and staff transitions.

To initiate the plan request, the physician submits the treatment prescription to one of our experienced medical physicists. Our physicist then connects to your local MultiPlan[®] Treatment Planning System via MultiPlan Remote Access and develops a high-quality plan, which is given a final review by the submitting physician.*

Planning Support and Efficiency When You Need It

Accuray Treatment Planning Services are a valuable resource for CyberKnife System customers, offering peace of mind by helping you maintain efficiency and optimize your department personnel.

- Provide overflow support during periods of high patient volume
- Assist your department during staff transitions, travel and vacations
- Offer a valuable planning resource to consult on complex treatment plans
- Perform plan audits to supplement staff training



Convenient and Easy-To-Use Program

FLEXIBLE

Pay-per-plan service with no monthly minimum

CONVENIENT

Our physicists can assist you from any location by remotely accessing the MultiPlan Treatment Planning System

EASY-TO-USE

Simply complete the plan request form and submit to our physicists by sending an e-mail to Accuray's dedicated treatment planning mailbox

TIMELY

Plans are completed and made available on your MultiPlan System within 72 hours, often sooner

*Accuray engages medical physicists, and other allied healthcare professionals, who are trained in the operation of the CyberKnife system and who are qualified to receive instructions from treating physicians and to prepare CyberKnife treatment plans for physician review, approval and use. The treating physician shall be solely responsible for determining the proper course of treatment and the clinical appropriateness of each treatment plan.